

SEPTEMBER 2021

# BURPEES

MAGAZINE

**Our Past  
President**

**Set subject  
OCTOBER  
2021**

**NEW BEGINNINGS**  
we welcome our new  
President

**PHOTOSHOP  
vs  
LIGHTROOM**





Burpengary  
Camera Club

introducing ...

2021

## COMMITTEE

**PRESIDENT**

**Lynette Romano**

**VICE PRESIDENT**

**Kerry Rasmussen**

**SECRETARY**

**Anne Reid**

**TREASURER**

**Eva Baker**

**EVENTS CO-ORDINATOR**

**Robert Constantine**

**IMAGE CO-ORDINATOR**

**Kerry Rasmussen**

**Paul Warren**

**NEWSLETTER EDITOR**

**Lynette Romano**

**PUBLIC RELATIONS**

**Irene Kernick**

**WEBMASTER**

**Robert Constantine**

**CLUB EQUIPMENT**

**CO-ORDINATOR**

**TBA**

See website for contact information

**BURPENGARY CAMERA CLUB**

# BURPEES

## MAGAZINE

[www.burpengarycameraclub.org.au](http://www.burpengarycameraclub.org.au)  
[burpees@burpengarycameraclub.org.au](mailto:burpees@burpengarycameraclub.org.au)

---

**KSP Theatre building**

Cnr. Old Bay Road and Maitland Road

Burpengary East

19h00 for **19h15** START

we meet every third Thursday of each month  
January - December

---

## NEWSLETTERS

Please see **CLUB NEWS** on the website  
to download your copy

Burpengary Camera Club is proudly

affiliated with the

**PHOTOGRAPHIC SOCIETY OF  
QUEENSLAND**

[www.psq.org.au](http://www.psq.org.au)

---

## CONTENTS

Page	
3	<b>Message</b> from outgoing President
4	<b>Introducing ...</b> incoming President
5	<b>Tutorial</b> Photoshop vs Lightroom
6	<b>Welcome to Burpengary club</b>
7	<b>What You Missed</b>
8/9	<b>Club Announcements</b>
10/11	<b>September 'YOUNG' Gallery</b>



# Message from Outgoing President

- Barry Barfield

Since forming the Burpengary Camera Club in early 2017, the Committee that is now retiring (August 2021) have hopefully set good foundations for their new successors. We have all enjoyed sharing our knowledge with the Club and appreciate the steady core of dedicated Members that have stuck with us during our time at the helm. Thank you.

Club Membership numbers grew steadily into the mid 30's until the Covid pandemic made everyone sit back and assess their personal exposure situation. During that initial phase of Covid, most Members wanted to venture out as little as was practical so the Club activity certainly declined.

We now face a World that must accept the restrictions and temporary lockdowns ongoing, whilst at the same time getting on with our own lives and lifestyle activities.

The retiring Committee have made many friendships through the Club and hope that these relationships will continue. All of us will continue to be an active part of the Club, whilst stepping back from instructive roles.

We trust that our involvement in Members photographic learning experiences was beneficial for those involved and hope that the knowledge acquired can be passed on down the line. Photography is undoubtedly a continual learning curve and you never, ever know it all.

So, - Welcome to the new Committee – we trust that you will all embrace the changes in leadership and settle in to your new roles and continue to assist new and established Members in their Photographic journey.

*Barry Barfield – Past President. Sue Rasmussen – Past Secretary. Marilyn Barfield – Past Treasurer. Kerry Rasmussen – Past and present Vice President and Image Co- Ordinator.*

## DIARISE THIS DATE

AS WE MEET TO CAPTURE THE SPLENDOUR OF THE NATURE WALK THROUGH THE BOONDAL WETLANDS

Sunday  
26th

September

at

15h30

Please reply to  
[robert@burpengarycameraclub.org.au](mailto:robert@burpengarycameraclub.org.au)







Born in South Africa in 1960, I spent the majority of my youth in Rhodesia (Zimbabwe). Being creative keeps me sane and I have always enjoyed creative hobbies. Over the years I have explored as many art mediums as possible, photography inspiring me the most. I always dreamed of having my own camera and being the third child of six siblings this reality was only a dream! When I got married and my own children left the nest, I bought my first camera, in 2005 to follow a dream.... a Fuji Finepix.

At the time I didn't have a clue about photography. I didn't even know how to use my camera correctly. I attended a 'Familiarise yourself with your camera' class, and what I learnt in this four-hour class drew me into the 'web' of photography. But at my second class of 'understanding photography' caught me on a sad footing... I HAD to have a SLR. I attended camera clubs and this reality proved itself even more so. I bought my first DSLR - Nikon D70

Well I snapped away at everything that moved or didn't, and read many photography magazines. I did an online three-year course to achieve a Diploma. I started entering and winning awards in various regional competitions.

In 2010 I received my first three International acceptances at the 7th Holland International image circuit.

I decided that it was time to do some serious photography and upgraded to a Nikon D300, and gradually a D800. In 2012 I won my first International GOLD medal at the China International Digital Photography Art exhibition. I currently shoot with a Nikon D4.

Photoshop opened a whole new world for me and my passion and current obsession is Altered Reality.

In 2013 I was involved in a major scuba diving accident, which changed my perspective and direction towards photography...To share my knowledge and 'drug' with anyone interested in this fascinating enriching hobby.

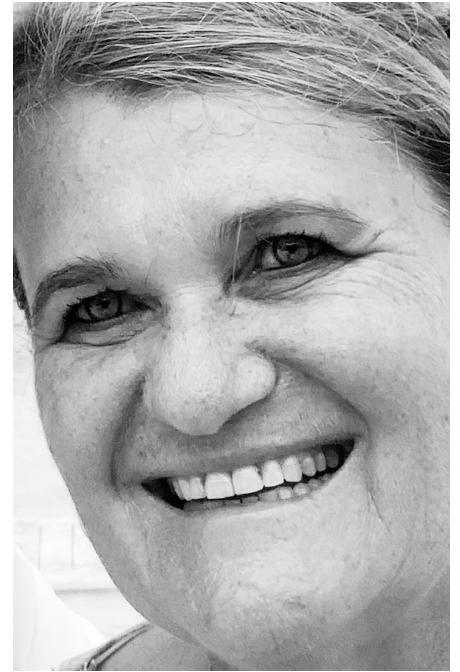
Through this opportunity as President of Burpengary Camera Club I hope to enrich our club, with the assistance of our elected Committee to form a team to ensure continuity of leadership and succession planning; support effective operations of the club; develop and implement a plan to attract and engage members; to provide the members with information about workshops and develop the needs of our members. This position allows us all to develop and grow, as knowledge is gained from all members of the club.

With a solid foundation and support of our members' participation our club will thrive and grow, and more importantly our members will shall also learn and grow.

Think of it as a service for others less fortunate than yourselves, landing in the hot seat of a committee chair.!

Gratitude to our Past President and his committee for their exceptional achievements over the past years bringing the club to where it is at now. Especially through the very tough times as Covid continues to disrupt 'our' world. In the short months I have met them, they most certainly have made me feel welcome. I take this opportunity now to Thank You for accepting me as your new President. To even attempt to follow in their footsteps for me will be a task and a half .... being in Australia for a mere 2 years and still stumbling in many areas ... I shall endeavour do my very best with Your help!

I wish for continued all-round growth, success and confidence, and urge you to go on climbing higher summits of achievements and recognition in both club and individual photography.



**Lynette Romano**

Lynette Romano



# Adobe Photoshop vs Lightroom?

When and Why to Use Each Program (extract from *creativelive.com*)

## What is Photoshop?

Photoshop is synonymous with photo editing. Originally created by Adobe for simple digital photo editing, the program's functionality has greatly expanded. Photoshop is used by graphic designers, architects, publishers and photographers. In short, it's a beast of a program that helps give creatives their power to create. Also, Photoshop is a pixel-level editor, meaning you can get up close and personal with every little dot of color that make up your digital image.

## What is Lightroom?

As a photo editor, Adobe Lightroom includes a subset of Photoshop's features that are custom tailored to the contemporary photographer. Lightroom covers the majority, if not all, of the image manipulation tools you'll most likely need. However, Lightroom is much more than a photo editor or image editing software. Lightroom helps you import, organize, manage, and find your images. In turn, Lightroom is photo management and photo editing, combined into a single tool. Unlike Adobe Photoshop, Lightroom is a nondestructive photo editor, meaning that you don't have to worry about "save as" button. In fact, Lightroom has no "save" button at all. All of the edits are automatically kept in your Lightroom catalogue, which acts as your database of edits and history.

## When Should I Use Lightroom vs Photoshop?

If you shoot RAW photos (which you should), then it is recommended that you first import your photos into Lightroom as the initial step of your image management process. Lightroom is a raw file editor so you don't need Adobe Camera Raw. Also, because of the photo management capabilities of Lightroom, you'll be organizing your digital photography as you import. Lightroom is perfect for most basic photo editing, including (but not limited to) cropping, white balance, exposure, histogram adjustments, tonal curves, black and white conversion, spot removal, red eye corrections, gradients, local adjustments, sharpening, noise reduction, lens profile corrections, vibrance, and saturation. If you're comfortable in Adobe Camera Raw, then developing a photo in Lightroom will look very familiar. If you're a beginning photographer, you'll most likely be satisfied with these features. Lightroom is also much easier to use than Photoshop, which can have more of a steep learning curve.

## Lightroom Workflow:

With Lightroom, you can create collections, add keywords, move multiple images or files around your hard drive, create slideshows, print books, and share your photos directly to Facebook with relative ease. As importantly, you can also copy or sync your photo edits to multiple photos at once. If you think Photoshop "Actions" are easy... They are nothing compared to the ease of using Lightroom. You can also use and create Lightroom presets to apply common settings across your photos. So, photographers who shoot raw images in volume, whether it's weddings, portraits, or babies, Lightroom will be a time saver.

## So When Should I Use Photoshop?

...when you can't use Lightroom. Depending on the type of photography you do, this can be fairly often or practically never. That being said, there are a few specific areas where Photoshop actions and Photoshop elements that outperform Lightroom. **Advanced Retouching:** If you want to have pixel level control to edit photos, or if you want to make an arm thinner or a person taller, Photoshop is needed. **Composites:** When you want to slice and dice a couple of images to create a single awesome image, Photoshop is your answer.

**HDR:** Although there are some great HDR plugins available for Lightroom (Photomatix), if you want to blend images together to pull out the highlights and shadows from multiple exposures, Photoshop can do this. Note: Lightroom does this as well, but with different effect.

**Panoramas:** With Photoshop, you can stitch several photos together to create beautiful panoramas. Note: Lightroom does this as well, but with different effect. **Advanced Healing:** While you can remove blemishes, stray hairs, whiten teeth, and remove small objects in Lightroom, the capabilities aren't as awesome as using the content aware magic of Photoshop's healing brush and patch tools.



# WELCOME TO BURPENGARY CAMERA CLUB

It is very pleasing to see the motivation and determination of the club's members. We hope continue to see it expand over time. We are an incorporated not for profit organisation and have affiliated with the Photographic Society of Queensland (PSQ). Through this organisation we have our public liability insurance and will be able to source more expert advice through speakers and judges. We hope that members will take on board information provided by guest speakers and judges to help improve their photographic abilities.

### Some brief information:

#### Website

The club website has been remodelled and now 'LIVE' with thanks to Robert Constantine. It will include our Club Diary of events and allow members to showcase some of their images and activities. Please submit images in a very low resolution to burpees@burpengary-cameraclub.org.au . Any suggestions for improvements will be most welcomed.

#### Facebook

The club Facebook page will be our advertising space for general information for the public and linked to the club's webpage.

#### Digital Club Calendar

This will be provided to members to enable the addition of outing dates, images subjects for judging and due dates for images to be submitted.

#### Digital News - "BURPEES"

This will be emailed to members monthly to showcase our images visible to members ONLY! It will also be a platform of learning and club announcements.

#### Competitions

The Club will listen to its members should we DO/DO NOT choose entering interclub competitions in the

### \*\*ie: HOW TO CREATE AND INVITE INTO A WHATSAPP GROUP

1. Go the Chats tab in WhatsApp
2. Tap New Chat > New Group. If you have an existing chat on the Chats tab, tap New Group.
3. Search for or select contacts to add to the group. Then tap Next.
4. Enter the Group Name (Subject)
5. Tap create when you are finished

near future... including that of our own internal club competition for members' individual images.

### There will be no club grading.

By arranging Judge critiques, members will be guided on how their images will be placed and are free to enter any external competition individually if they wish. Judging by PSQ accredited judges will take place where images will be awarded; **OUT of CATEGORY; ACCEPTANCE; COMMENDED; HIGHLY COMMENDED; MERIT & HONOURS.** It is your responsibility to take note of your award.

### Outings\*\*

Have you completed and submitted our survey? It is intended that outings be arranged for members on weekends, evenings or mid week allowing flexibility for those able to attend. We hope to arrange a WhatsApp or Messenger platform as a form of instant communication between members on our outings. We don't want to lose anyone!

### Club Payments

Annual individual membership fee is \$35.00, with partner \$50.00. We also ask that you pay \$5 at every meeting which is the club's only other source of revenue and goes towards payment of club insurance, PSQ affiliation, hall rental and tea/coffee.

### THE LAYERS OF ATTRIBUTES



- 7. Artistic Merit, Emotion!
- 6. Creativity
- 5. Experimentation
- 4. Metaphor, Story, Message
- 3. Exploiting the Medium
- 2. Visual design, Composition
- 1. Focus and Exposure







# WHAT YOU MISSED

## Light Trails

*photographed at the Anzac Park, Burpengary*





# What you need to know

## BASIC INFORMATION FOR MEMBERS ENHANCEMENT GUIDELINES FOR DIGITAL IMAGES

The following are guidelines for members to follow regarding digital and printed media for our club critique.

- Minor blemishes or imperfections may be corrected.
- Modifications such as resizing, cropping, selective lightening/darkening, sharpening and hue/saturation are permissible
- Minor adjustments as above must appear natural.
- All images submitted for critique must be the work of the member submitting.
- Colour images are those containing more than one colour. This also includes monotone images that have been partially coloured.
- Monochrome images are those containing only one shade of colour eg black, red etc.
- There is no age limit for images submitted for critique
- All images presented for slideshows or critique must adhere to the resizing rules.
- The required image size for projected digital images **1920 x 1200** pixels.
- **Portrait:** must have the longest side of no greater than **1200** pixels, or those in square format
- **Landscape** images or **panoramas** the longest side must be no greater than **1920** pixels.
- and **300dpi** maximum density.
- Maximum file size is 2MB
- Digital images should be labelled with your shortened name (*maximum 6 letters*) subject abbreviation and image title with no spacing, no 'underbars', no 'spaces', no 'numbers', ie: an image for the nature subject would be labelled:

- SueRasNaBlueRobin

### SUBMITTING DIGITAL IMAGES

Digital images submitted will have the following abbreviated subjects:

- O = OPEN
- N = NATURE
- P = PORTRAITURE
- PJ = PHOTO JOURNALISM
- Sc = SCAPES
- Sp = SPORT
- A = ALTERED REALITY
- PT = PHOTO TRAVEL

**SS = SET SUBJECT**

**For the month of OCTOBER members are to submit TWO images each of ANY TWO subjects listed above. As well as ONE image of the said SET SUBJECT mentioned below. This set**

**subject will allow members to “think out of the box.”**

## OCTOBER SET SUBJECT ‘Creepy Crawlies’

A total of **FIVE** images - Submit images by email to:

[rasso6@bigpond.com](mailto:rasso6@bigpond.com)

required **ten days** prior to the monthly meeting, ie **before midnight 10th October 2021.**

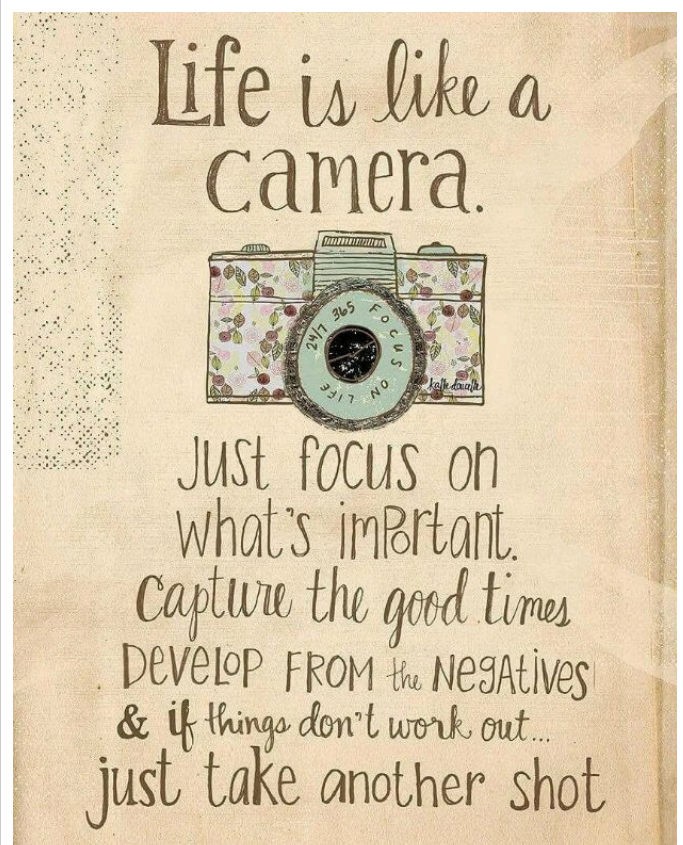
**NB Please ensure your email subject is IMAGES FOR CRITIQUE to save Kerry time in collecting your images**

### SUBMITTING PRINT IMAGES

There will be **NO** print images for judging during the month of October.

## DEFINITION OF CREEPY CRAWLIES:

Any little 'critters' that make your skin crawl. ie any insects, frogs, snakes, moths, butterflies, dragonflies, spiders, lizards, ants ... etc.







## **Open (O)**

This category is included basically to enable the photographer to enter photographs that do not fall into any of the BELOW categories, e.g. abstract (pattern) pictures, Still Life. Any photograph may be entered in this section e.g. a second wildlife or landscape or portrait, if those are your favourite subjects. Any form of manipulation is allowed.

## **Nature (N)**

This category covers wild animals, reptiles, birds, insects, marine life, plant life or any geological subject in its natural habitat. Domestic animals, cultivated plants, flower arrangements or still life and taxidermy models are ineligible. Entries that have been enhanced or manipulated in any way are ineligible. Human elements, if present, should be unobtrusive.

## **Portraiture and Figure studies (P)**

These are photographs where a human provides the major centre of interest. They can include the whole or part of the body, demonstrating a likeness to the subject and may convey expression, emotion and / or personality. Portraiture is not restricted to head and shoulders and may include just a part of the face, a back view or even a full length study.

## **Photojournalism (PJ)**

A photojournalistic photograph is one composed on a situation which is newsworthy and tells a pictorial story without words, e.g. men at work, the type of picture you would expect to find in a newspaper or magazine, etc. Entries that have been enhanced or manipulated in any way are ineligible.

## **Scapes(Sc)**

This category includes architecture and general pictorial scenes taken outdoors. The use of human elements is acceptable to give scale, add interest or tell a story. A landscape comprises the visible features of an area, including physical elements such as landforms, water, living elements of flora and fauna, abstract elements like lightning and weather conditions. No techniques that add, relocate, replace, or remove pictorial elements except by cropping are permitted. Techniques that enhance the presentation of the photograph without changing the nature story or the pictorial content, or without altering the content of the original scene, are permitted including HDR, focus stacking and dodging/burning. All allowed adjustments must appear natural. Colour images can be converted to greyscale monochrome. A montage or bas-relief or digital manipulation is acceptable providing its presence enhances the picture and cannot easily be detected.

## **Sport (S)**

Images that capture the intensity, emotions and action of the chosen sport subject. It could be professional or amateur, the focus could be on the sportsperson, the sport environment, the effort expended, the struggle or reward. A strong narrative must be present. Entries that have been enhanced or manipulated in any way are ineligible.

## **Altered Reality (A)**

The photographs represent figments of the photographer's imagination and need not necessarily have any photographic or camera manufactured image incorporated in them. Your aim is to present a surrealistic picture. Any process such as etch-bleach, bas-relief, solarisation, posterization, montage, multiple images or digital manipulation may be used. Generally all photographs using these techniques should be entered in this category, unless the level of their usage is so low as to make their presence undetectable. Pictures in which significant digital manipulation has been used must be entered in the section. All images that are used to create the altered images must be the authors own work.

## **Photo-travel (PT)**

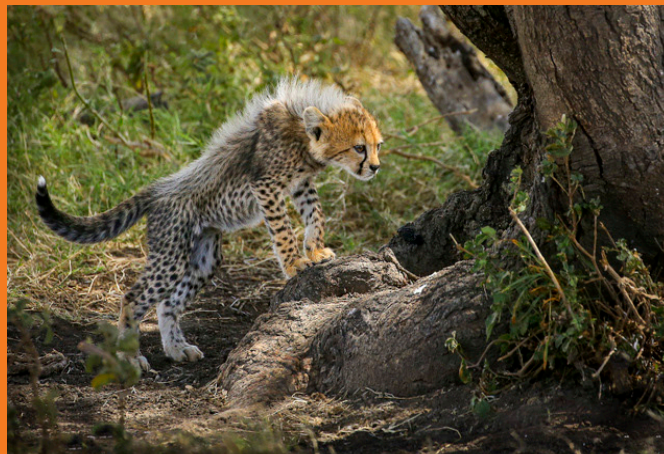
Images which tell a story about a place and its people or culture, and should uniquely identify the region or place. Entries that have been enhanced or manipulated in any way are ineligible.



# SEPTEMBER GALLERY SET SUBJECT YOUNG



Anne Reid - Family shot



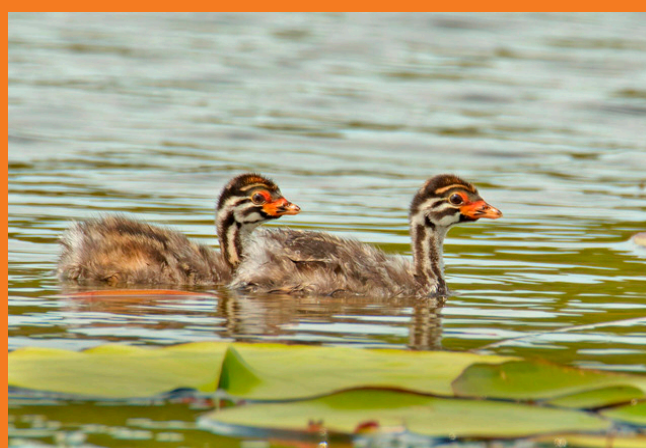
Barry Barfield - Cheetah Cub



Dorle Hannam - Young Leaves



Eva Baker - Doves



Gary Hannam - Baby Swans



Marilyn Barfield - Innocence



Merryl Baillie - Chick





Lynette Romano - Consoling



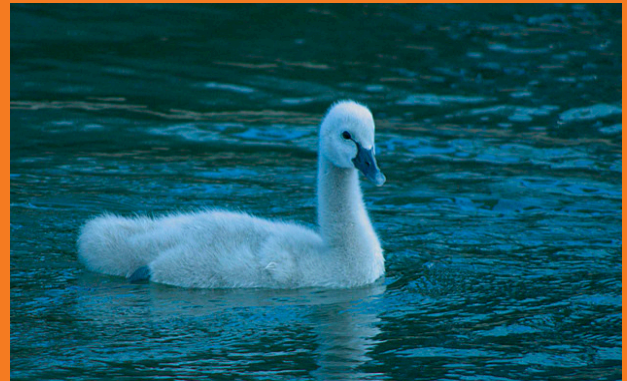
Peter Coleman - Lunch Time



Paul Warren - Breach



Kerry Rasmussen - Frogmouth Family



Robert Constantine - Young Swan

Peter Cawley - Tai Day



Robyn Mahony - Banana Hand



Sue Rasmussen - Baby elephant walk







## CLUB NOTICES

Set Subject for OCTOBER 2021

is **“CREEPY CRAWLIES”**

### NAME TAGS

As our Club continues to receive regular visitors and new members we are always seeing new faces. Our Committee has requested that ALL Members wear their name tags during club meetings and welcome new faces.

*... to remember a face is easy  
... to remember a name  
is the challenge!*

### COVID-19

Standard distance socialising rules apply. It is still mandatory to wear a mask on entering the Club hall and can be removed once seated.

Please ensure you have scanned the QR code on entering.

# SET SUBJECTS 2021

**OCTOBER** Creepy Crawlies

**NOVEMBER** Painting with light



**.... to get interactive with your club.**

**If you know of an interesting photographic opportunity please share it with the members**

**WhatsApp IT!**

**LET'S CREATE THE GROUP CHAT... see page 6**